



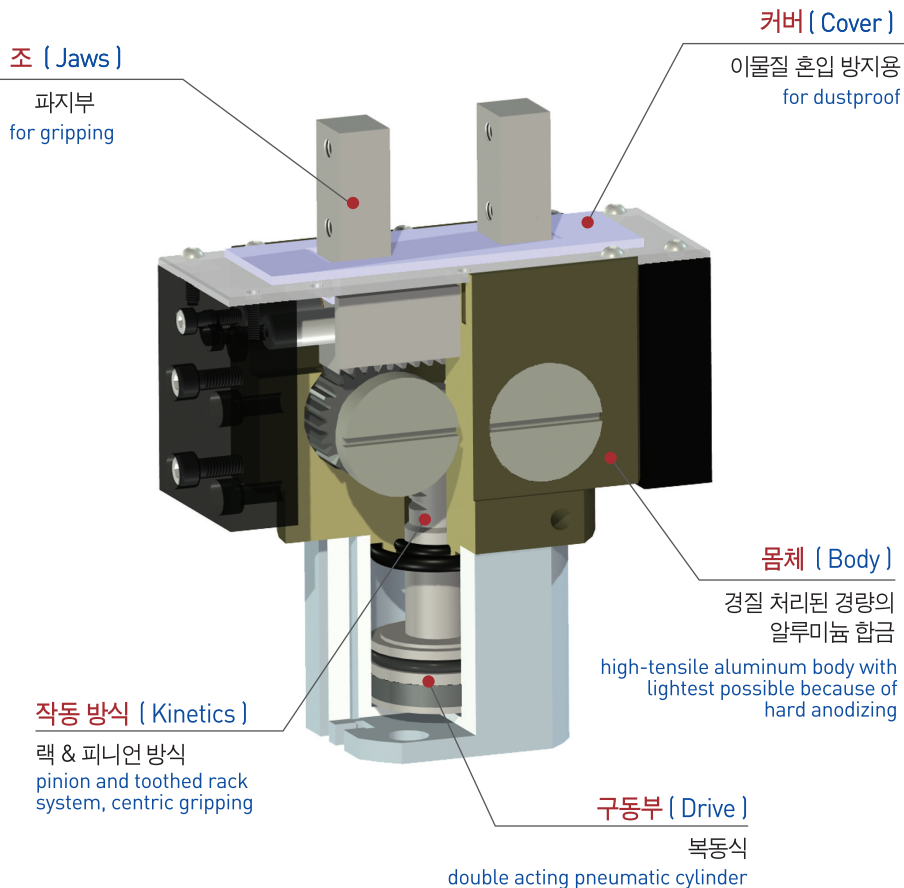
특징 (Character)

- RACK & PINION 방식(AF13C-20은 LINK & LEVER 방식)
Rack & Pinion type (AF13-20 is Link & Lever type)
- 바디와 가이드로드에 의한 2중지지 방식의 견고성
Strength of double support by body and guide rod
- 소형에서 대형까지 다양한 제품군
Wide and various selection possible by various size
- 3방향 취부로 다양한 방법의 취부가 가능
Mounting possible from 3 sides
- 개폐검출 센서 전제품 부착가능
Magnetic sensor is available for open-close sensing
- AF13+이물질 혼입방지용 COVER 부착제품
AF13+ dustproof cover attached



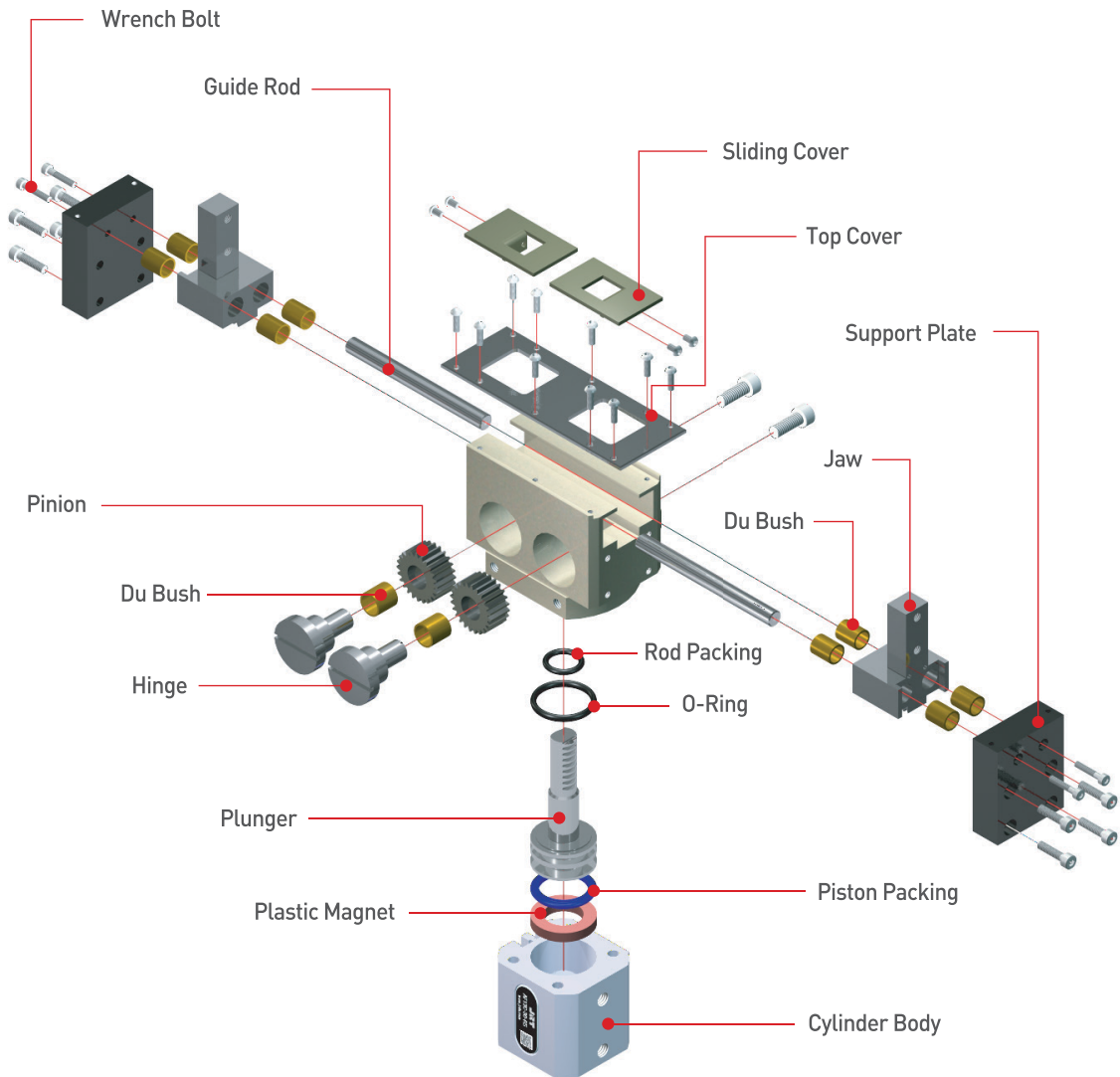
AF101
AF02
AF03
AF04P
AF105P
AF06
AF10
AF13
AF13C
AF14
AF15
AF316
AF17
AF117
AF19
AF24
AF26
AF28D
AF30
AF30L
AF30SP
AF40
AF46
AF56N
RAF56N
MF16

랙 & 피니언 방식 (Rack & Pinion type)



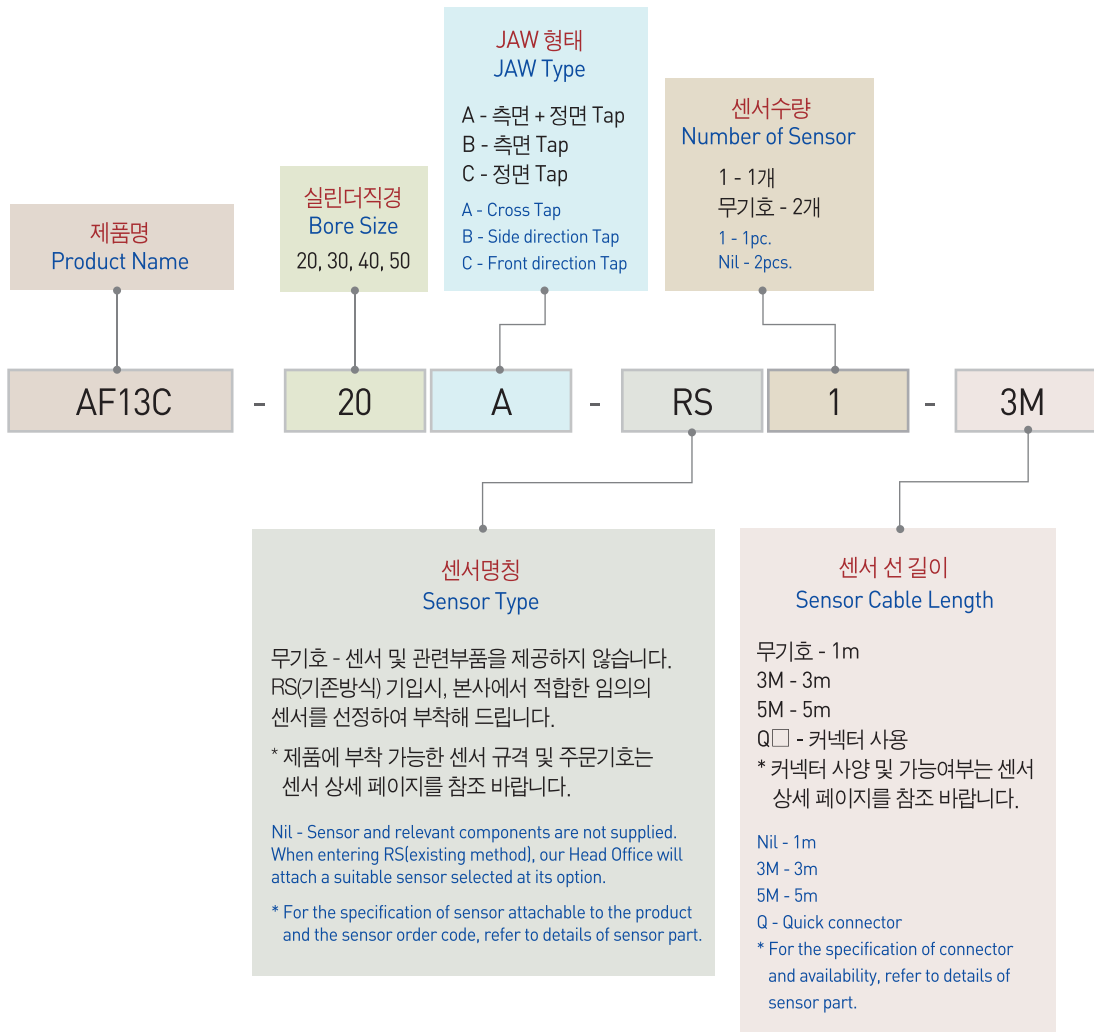
부품분해도 (Exploded view)

※ 본 분해도는 한 제품을 예시하였으므로 기종별로 차이가 있을 수 있습니다
 ※ This is exploded view illustrates a certain product only. The contents may vary by product models.



주문기호 (Ordering Code)

- AF101
- AF02
- AF03
- AF04P
- AF105P
- AF06
- AF10
- AF13
- AF13C**
- AF14
- AF15
- AF316
- AF17
- AF117
- AF19
- AF24
- AF26
- AF28D
- AF30
- AF30L
- AF30SP
- AF40
- AF46
- AF56N
- RAF56N
- MF16



☐ 제품사양 (Specification)

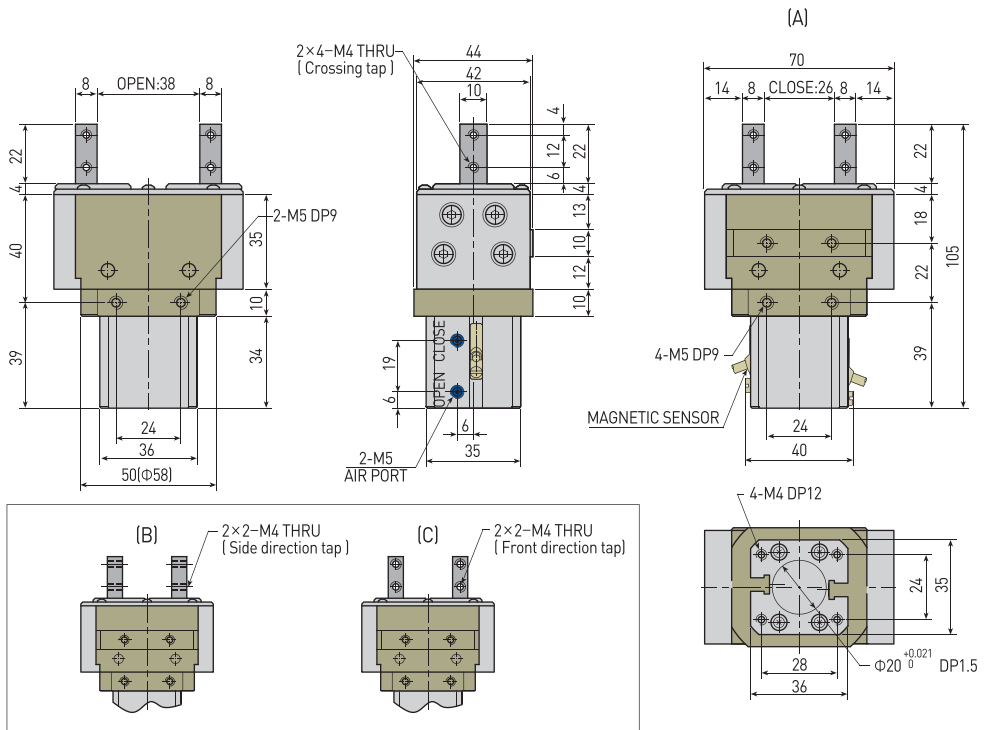
P=공기압력(bar) , L=작용점까지의 거리(mm)
P=Air Pressure(bar) , L=Exertion length(mm)

제품명칭 Products Name	AF13C-20	AF13C-30	AF13C-40	AF13C-50	단위 Unit
개폐범위 Stroke	12	24	30	36	mm
제품중량 Weight	0.55	1.44	2.2	3.7	kg
최대치구길이 Max. length attach	70	90	110	130	mm
배관접속구 Fitting size	M5	PF(G) 1/8	PF(G) 1/8	PF(G) 1/8	
파지력 : 열림시 Gripping force : Open	24.53P/(1+0.025L)	55.92P/(1+0.02L)	98.1P/(1+0.02L)	154.02P/(1+0.015L)	N
파지력 : 닫힘시 Gripping force : Close	19.62P/(1+0.025L)	48.07P/(1+0.02L)	83.39P/(1+0.02L)	137.34P/(1+0.015L)	N
1사이클당 공기소모량 Air consumption per cycle	3.3	15.1	33.9	65.0	cm ³
닫힘시/열림시 시간 Closing / Opening time	0.01/0.01	0.01/0.01	0.01/0.02	0.03/0.04	sec
반복정밀도 Repeat accuracy	0.03				mm
연속사용회수 Continuation usage amount	60				cpm
사용압력 Operating pressure	3~7				bar
주위온도 Ambient temperature	-5 to 60				℃
윤활 Lubrication	불필요 Needless				

반복정밀도 : 연속 100회 작동후 측정치
AF13 작용점에서의 파지력 그래프 참조.
After 100 consecutive strokes to end positions
See AF13 Gripping Force Graph

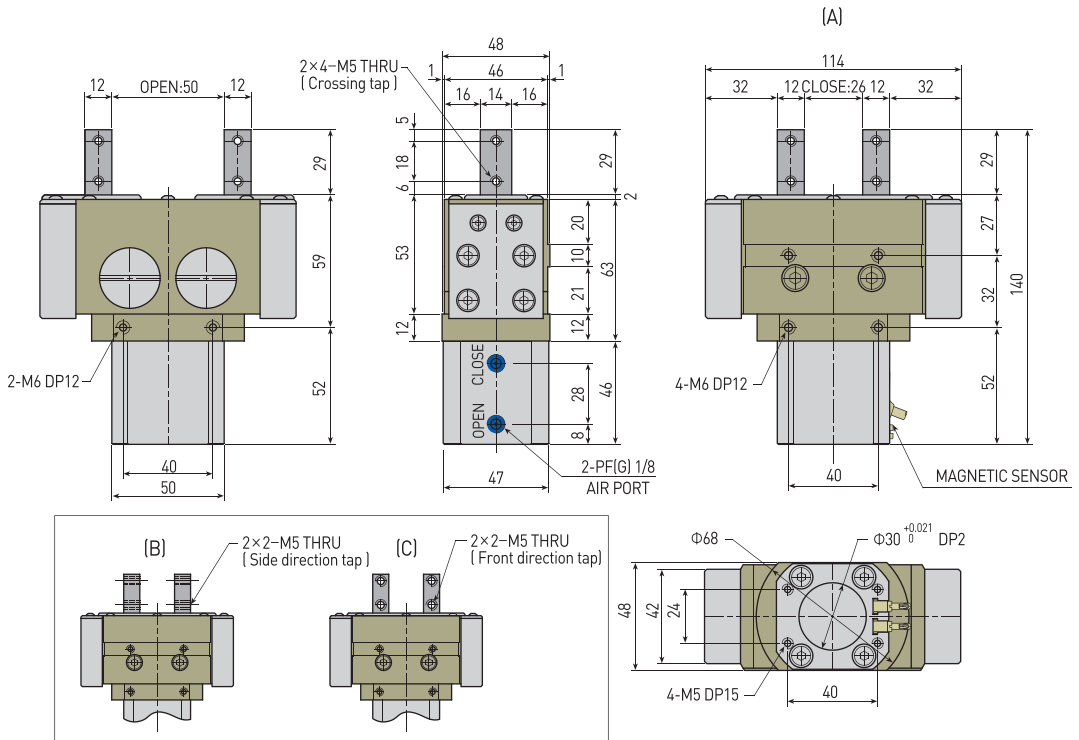
☐ NOTE

AF13C-20

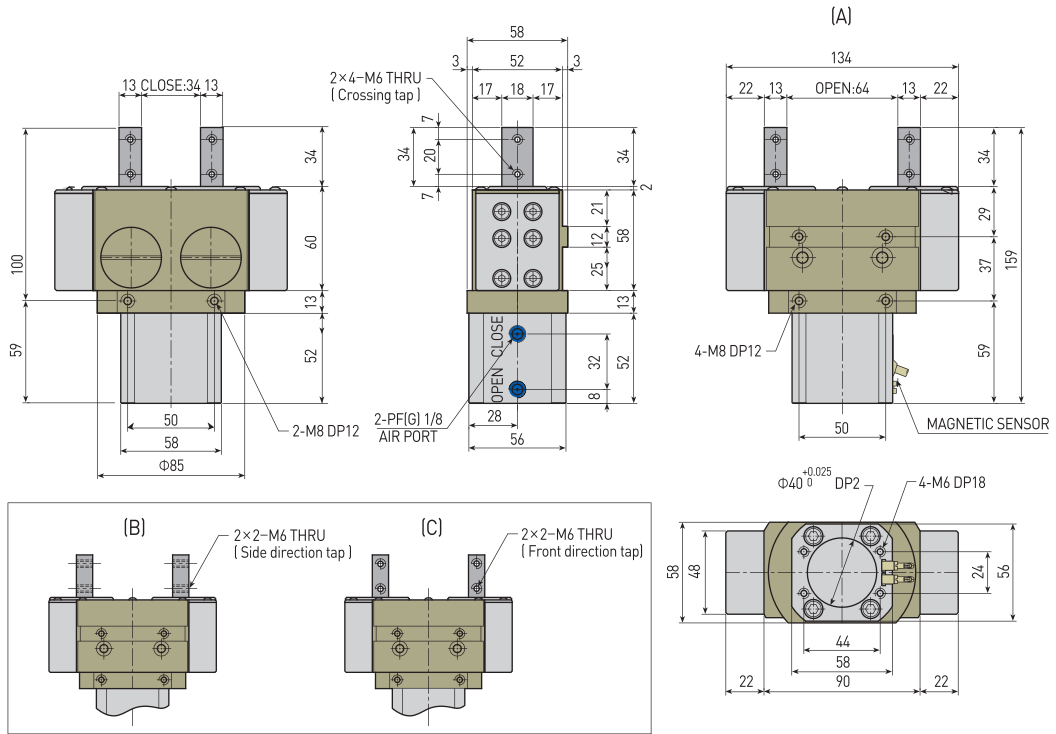


- AF101
- AF02
- AF03
- AF04P
- AF105P
- AF06
- AF10
- AF13
- AF13C**
- AF14
- AF15
- AF316
- AF17
- AF117
- AF19
- AF24
- AF26
- AF28D
- AF30
- AF30L
- AF30SP
- AF40
- AF46
- AF56N
- RAF56N
- MF16

AF13C-30



AF13C-40



AF13C-50

